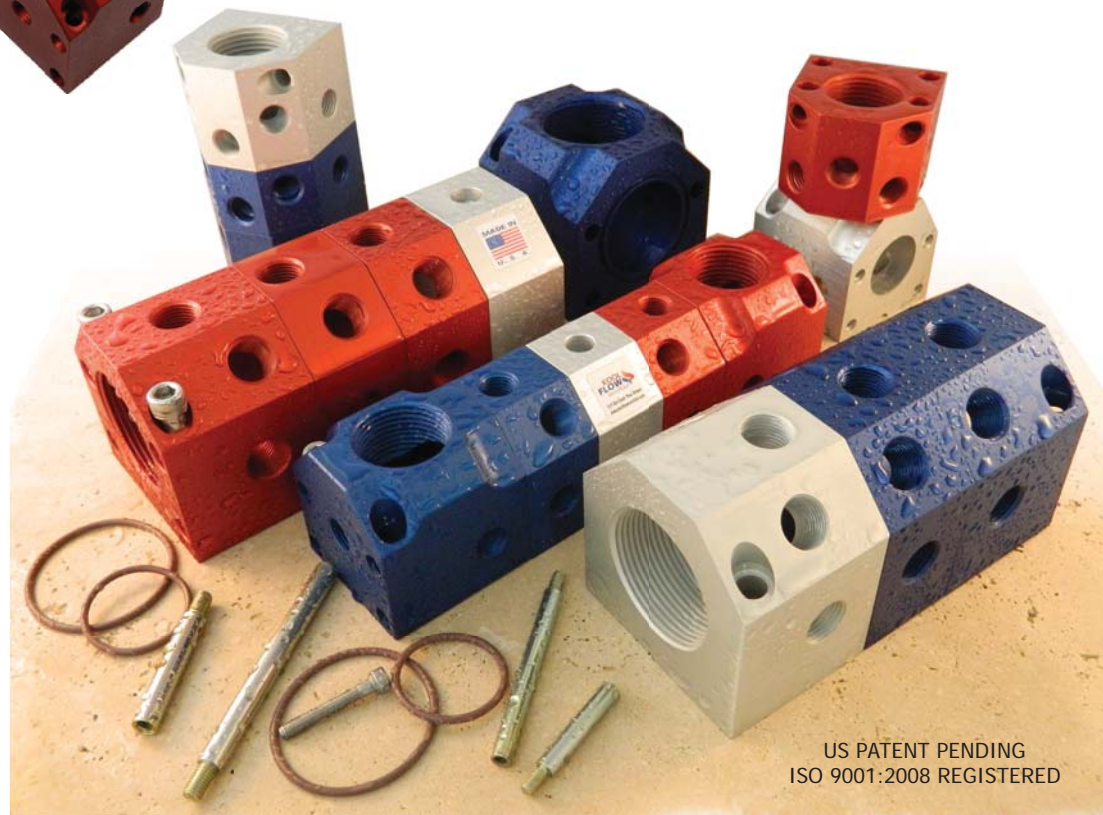


Flexible Water Manifold System

Features:

- 90° compact manifold available
- PCS Company online e-Kool Flow configurator
- Instant price & downloadable CAD file following configuration
- Flexible block design
- Most orders ship same day
- Compact space saving design
- Shipped fully assembled
- Made in U.S.A.



US PATENT PENDING
 ISO 9001:2008 REGISTERED

Applications:

- Injection molding
- Die casting
- Extrusion technology
- Resistant welding
- Pneumatic control
- Vacuum forming
- Water distribution

Not sure which Kool Flow Manifold you need?

Check out our new **e-Kool Flow water manifold configurator**
at www.pcs-company.com!

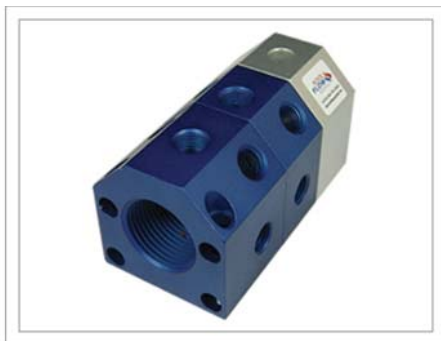
Easy to use drop-down menu configuration.

Port-to-Port (PP)



Color: Red/Silver or Blue/Silver
of Inlets: One each end
of Outlets: (25) Max.
of Block: (5) Max.

Port-to-Blank (PB)



Color: Red/Silver or Blue/Silver
of Inlets: One
of Outlets: (25) Max.
of Block: (6) Max.

Port-to-Divide (PD)



Color: Red/Silver/Blue
of Inlets: One each end
of Outlets: (50) Max.
of Block: (11) Max.

90° Port-to-Port (PP)



Color: Red/Silver or Blue/Silver
of Inlets: One each end
of Outlets: (21) Max.
of Block: (5) Max.

90° Port-to-Blank (PB)



Color: Red/Silver or Blue/Silver
of Inlets: One
of Outlets: (23) Max.
of Block: (6) Max.

90° Port-to-Divide (PD)



Color: Red/Silver/Blue
of Inlets: One each end
of Outlets: (46) Max.
of Block: (11) Max.