

Custom Components

High Quality, Quick Reliable Delivery & Competitive Pricing

Products offered:

- Blades
- Extension Plugs
- Sleeves
- Shoulder Bushings
- Pins
 - Angle & Return Pins
 - Ejector & Core Pins (*Cut to Length*)
 - Leader Pins
- Insulator Sheets
- Sprue Bushings
- Water Cooled Cores
- Cooling Components
- Support Pillars
- Locks



Wear Resistant Coating Available

- Armorclad™
- Titanium Nitride
- Flash Chrome
- Electroless Nickel

MATERIALS OFFERED		
S-7	moldMAX™	Stainless Steel
A-2	H-13	316
A-10	CPM-9V	420
M-2	CPM-10V	440
D-2		



Request For Quote Form

Aftermarket Replacement Parts

Please supply the following information:	OEM Manufacturer	OEM Part Number	*Is CAD/Drawing Available Yes or No	QTY.
Nozzle Tips				
Nozzle Housing/Bodies				
Nozzle Heaters				
Nozzle Thermocouples				
Manifold Heaters				
Manifold Thermocouples				
Gate Shell Insulators				
Gate Inserts				
Valve Gate Pins				

COMPANY _____

CONTACT _____

E-MAIL _____

ADDRESS _____

CITY, ST. ZIP _____

PHONE _____

FAX _____

DATE _____



www.pcs-company.com

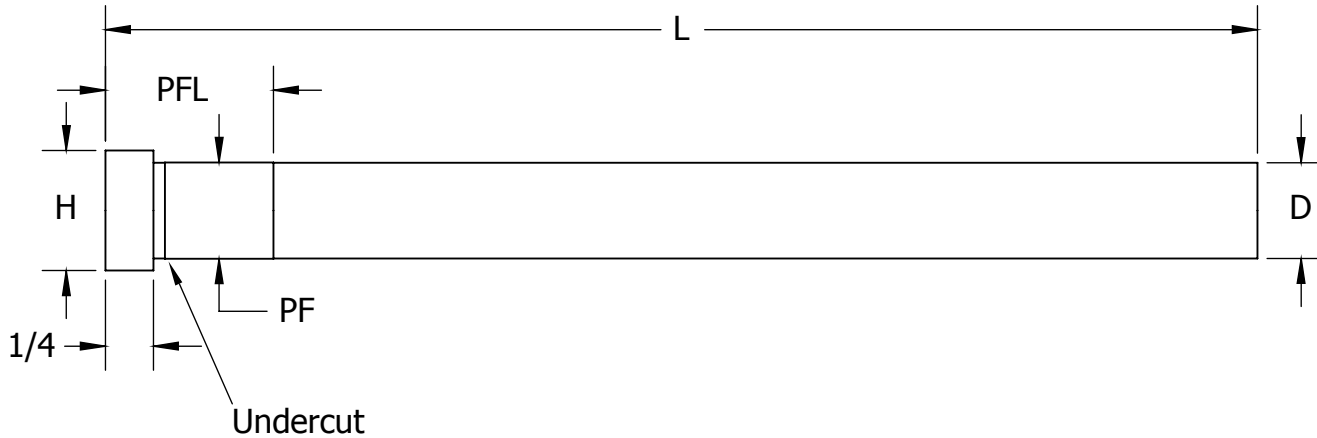
Phone: 800-521-0546

Fax: 800-505-3299

E-mail: customcomponents@pcs-company.com

Note: Email or Fax CAD/Drawing and product image next to ruler with this document.

Angle Pin



Angle Pin Design Table: Enter custom dimensions below		Requested Tolerances
Overall Length (L)		
Pin Diameter (D)		
Head Diameter (H)		
Press Fit Diameter (PF)		
Press Fit Length (PFL)		
Quantity		
Material		
Hardness		

Standard Tolerances	
Overall Length (L)	+ .125 + .000
Pin Diameter (D)	+ .0000 - .0005
Head Diameter (H)	+ .000 - .010
Press Fit Diameter (PF)	+ .0005 - .0000
Head Thickness (T)	+ .000 - .005
Press Fit Length (PFL)	- .010 - .040

COMPANY _____

CONTACT _____

E-MAIL _____


ADDRESS _____

CITY, ST. ZIP _____

PHONE _____

FAX _____

DATE _____

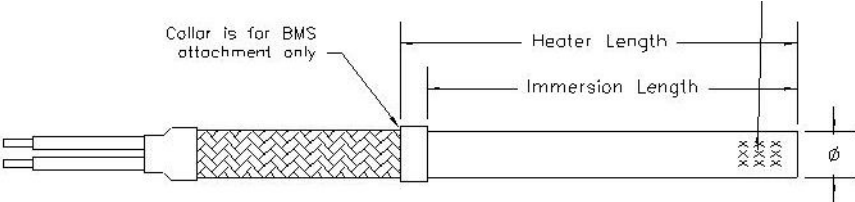


Note: Quote turnaround time is approximately 24 hours.

www.pcs-company.com

Phone: 800-521-0546
 Fax: 800-505-3299
 E-mail: customcomponents@pcs-company.com

Made to order - Cartridge Heater RFQ Form



Outside Diameter: _____

Bore Size: _____

Overall Heater Length: _____

Immersed Length: _____

Rated Wattage: _____

Rated Voltage: _____

Heater Operating Temperature (°F): _____

Washdown or Moisture Environment: Yes No

Lead Length: _____

Ground Wire: Yes No

Quantity: _____

COMPANY _____

CONTACT _____

E-MAIL _____

ADDRESS _____

CITY, ST. ZIP _____

PHONE _____

FAX _____

DATE _____

Lead Type - Choose one

- Fiberglass (*Standard*)
- Fiberglass (*High Temp*)
- Silicone
- Silicone Cable
- Teflon
- Teflon High Amp

Potting Options - Choose one

- Ceramic
- Epoxy
- Teflon Plug
- Silicone
- Silicone (*High Temp*)

Lead Protection

- Fiberglass Sleeve
- Braided Metal Sleeve
- Armored Cable
- Gas Proof Cable

Exit and Removal - Optional


- Right Angle Exit
- Right Angle Block
- Flange
- Knockout Tab
- Anti-Seize Coating
- NPT Fitting

Thermocouple - Optional

- J K None

Thermocouple Location-Optional

- Tip Middle



Note: Quote turnaround time is approximately 24 hours with completed template

Phone: 800-521-0546

Fax: 800-505-3299

E-mail: customcomponents@pcs-company.com

Custom Mold Plaque Request For Quote Form



Full Color Thermal Set Graphic Plaque

Choose plaque type:

- Rigid Aluminum
 Flexible Magnetic

If Flexible Magnetic: *(Choose from sizes below)*

- 4" x 6"
 5" x 8"

For Rigid Aluminum Plaque Specify:

Length: _____

Width: _____

Corner option: *(Choose one)* Square Radius

Corner Radius: *(Choose one)* .125" .250"

Mounting Hole Size: *(Choose one)* .125" .1875" .250" .280"

Include mounting hole location on drawing

Adhesive Backing: Yes No

Drawing Name: _____

Quantity: _____

Note: Request For Quote Form & File required for each unique plaque.

Submit request for quote form and file to: customcomponents@pcs-company.com

Traditional Laser Etched Aluminum Plaque

Specify:

Length: _____

Width: _____

Corner option: *(Choose one)* Square Radius

Corner Radius: *(Choose one)* .125" .250"

Mounting Hole Size: *(Choose one)* .125" .1875" .250" .280"

Include mounting hole location on drawing

Choose Plaque color:

- Black background / Silver etched
 Red background / Silver etched
 Blue background / Silver etched

Adhesive Backing: Yes No

Drawing Name: _____

Quantity: _____

Note: Request For Quote Form & File required for each unique plaque.

Submit request for quote form and file to: customcomponents@pcs-company.com

Custom Mold Plaque Request For Quote Form



Laser Etched Lamacoid Plastic Plaque

All Lamacoid Plaques come standard with adhesive backing.

Specify:

Length: _____

Width: _____

Choose Plaque color:

- White background / Black engraving
- Black background / White engraving
- White background / Red engraving
- Red background / White engraving
- White background / Blue engraving
- Blue background / White engraving
- Yellow background / Black engraving

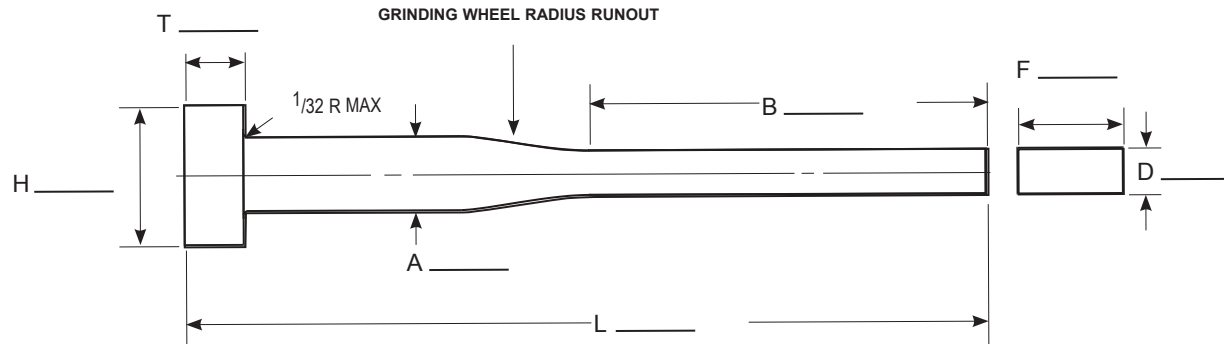
Drawing Name: _____

Quantity: _____

Note: Request For Quote Form & File required for each unique plaque.

Submit request for quote form and file to: customcomponents@pcs-company.com

Custom Components Quote Request Template **Ejector Blades**



Ejector Pin Design Table: Enter custom dimensions below		Requested Tolerances
Blade Thickness (D)		
Blade Width (F)		
Pin Diameter (A)		
Head Diameter (H)		
Head Thickness (T)		
Blade Length (B)		
Overall Length (L)		
Material (PCS standard= H13)		
Hardness		
Quantity		
Coating available: Armorclad™		

Corner Specifications	
Standard	90° Sharp
Corner Radius Available	
Please specify radius:	

Standard Tolerances	
Blade Thickness (D)	+ .0000 - .0003
Blade Width (F)	+ .0000 - .0003
Pin Diameter (A)	+ .000 - .001
Head Diameter (H)	+ .000 - .010
Head Thickness (T)	+ .000 - .002
Blade Length (B)	+ .062 - .000
Overall Length (L)	+ .062 - .000

COMPANY _____

CONTACT _____

E-MAIL _____

ADDRESS _____

CITY, ST. ZIP _____

PHONE _____

FAX _____

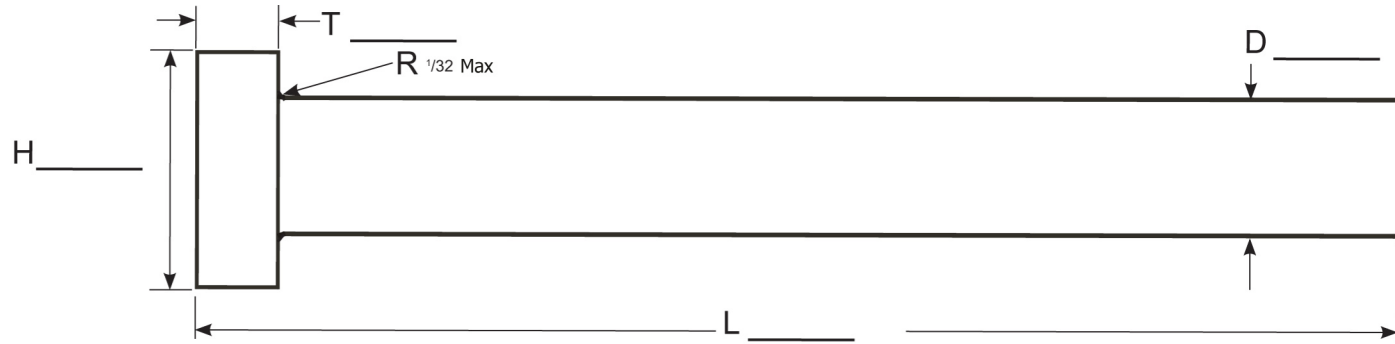
DATE _____

PCS COMPANY
www.pcs-company.com

Note: Quote turnaround time is approximately 24 hours.

Phone: 800-521-0546
Fax: 800-505-3299
E-mail: customcomponents@pcs-company.com

Ejector Pin



Ejector Pin Design Table: Enter custom dimensions below		Requested Tolerances
Length (L)		
Pin Diameter (D)		
Head Diameter (H)		
Head Thickness (T)		
Quantity		
Material		
Hardness		
Coating available: Armorclad™		

Standard Tolerances	
Length (L)	+0.062 -0.000
Pin Diameter (D) ≤ 1/2"	+0.0000 -0.0003
Pin Diameter (D) > 1/2"	+0.0000 -0.0005
Head Diameter (H)	+0.000 -0.010
Head Thickness (T)	+0.000 -0.002

COMPANY _____

CONTACT _____

E-MAIL _____

ADDRESS _____

CITY, ST. ZIP _____

PHONE _____

FAX _____

DATE _____

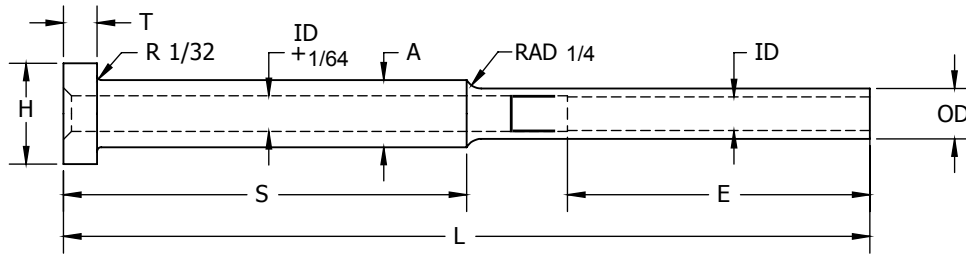
PCS COMPANY
www.pcs-company.com

Note: Quote turnaround time is approximately 24 hours.

Phone: 800-521-0546
 Fax: 800-505-3299
 E-mail: customcomponents@pcs-company.com

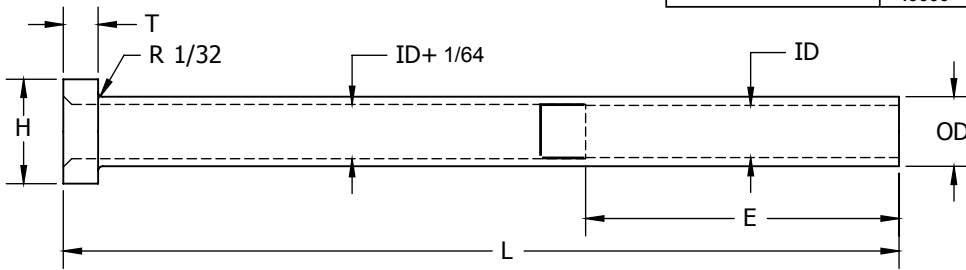
Ejector Sleeves: Step/Straight

Step Sleeve



Standard Tolerances	
Sleeve O.D. (OD)	+0.000 -0.001
Head Diameter (H)	+0.000 -0.010
Head Thickness (T)	+0.000 -0.002
Overall Length (L)	+0.032 -0.000
Sleeve I.D. (ID)	+0.0005 -0.0000

Straight Sleeve



COMPANY _____

CONTACT _____

E-MAIL _____

ADDRESS _____

CITY, ST. ZIP _____

PHONE _____

FAX _____

DATE _____

Step Ejector Sleeve Design Table: Enter custom dimensions below		Requested Tolerances
Sleeve Diameter (OD)		
Shoulder Diameter (A)		
Head Diameter (H)		
Head Thickness (T)		
Overall Length (L)		
Inside Diameter (ID)		
Bearing Length (E)		
Shoulder Length (S)		
Material		
Hardness		
Quantity		
Coating available: Armorclad™ <input type="checkbox"/> Yes <input type="checkbox"/> No		

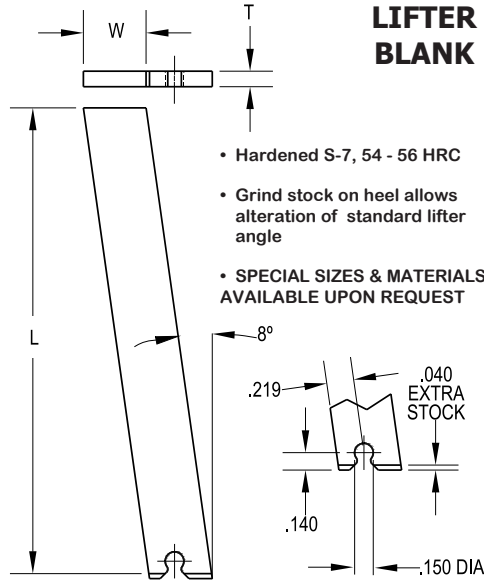
Straight Ejector Sleeve Design Table: Enter custom dimensions below		Requested Tolerances
Sleeve Diameter (OD)		
Head Diameter (H)		
Head Thickness (T)		
Overall Length (L)		
Inside Diameter (ID)		
Bearing Length (E)		
Material		
Hardness		
Quantity		
Coating available: Armorclad™ <input type="checkbox"/> Yes <input type="checkbox"/> No		

PCS COMPANY *Note: Quote turnaround time is approximately 24 hours.*
www.pcs-company.com

Phone: 800-521-0546
Fax: 800-505-3299
E-mail: hotrunners@pcs-company.com

Custom Components Quote Request Template **E-Z Lifter™ Mini & Standard Series Lifter Blanks**

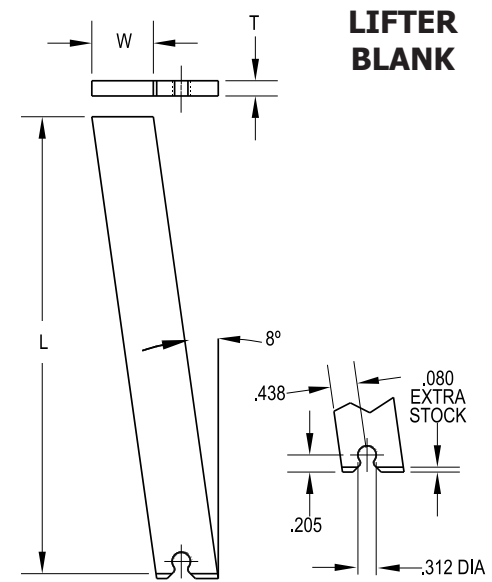
Mini



Standard Tolerances	
Length (L)	+0.060 -0.000
Width (W)	-0.0005 -0.0010
Thickness (T)	-0.0005 -0.0010

E-Z Lifter™ Mini Lifter Blank Table: Enter custom dimensions below	
	Mini
T Dimension	
L Dimension	
W Dimension	
Quantity	

Standard



E-Z Lifter™ Standard Lifter Blank Table: Enter custom dimensions below	
	Standard
T Dimension	
L Dimension	
W Dimension	
Quantity	

COMPANY _____

CONTACT _____

E-MAIL _____

ADDRESS _____

CITY, ST. ZIP _____

PHONE _____

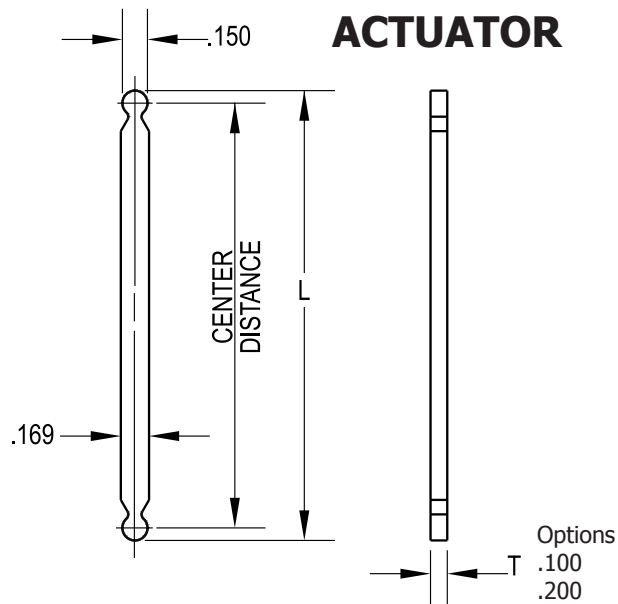
FAX _____

DATE _____

PCS COMPANY *Note: Quote turnaround time is approximately 24 hours.*
www.pcs-company.com

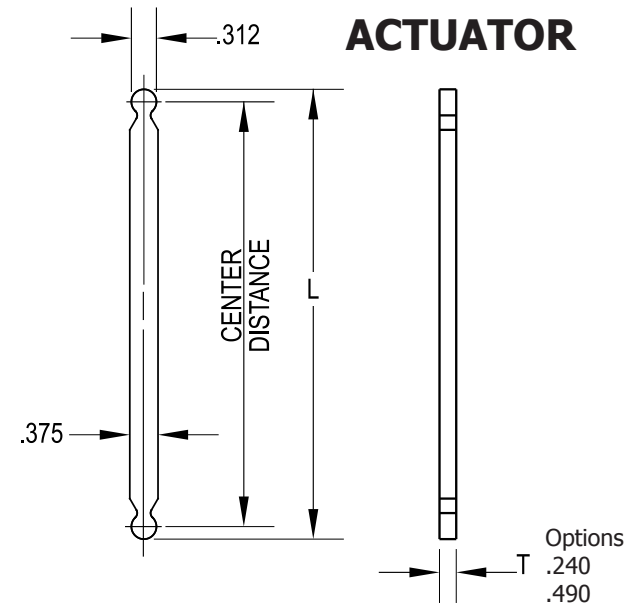
Phone: 800-521-0546
Fax: 800-505-3299
E-mail: customcomponents@pcs-company.com

Mini or Compact Series



E-Z Lifter™ Mini Series Table: Enter custom dimensions below	
	Mini
T Dimension	
L Dimension	
Quantity	

Standard



E-Z Lifter™ Standard Series Table: Enter custom dimensions below	
	Standard
T Dimension	
L Dimension	
Quantity	

COMPANY _____

CONTACT _____

E-MAIL _____

ADDRESS _____

CITY, ST. ZIP _____

PHONE _____

FAX _____

DATE _____



Note: Quote turnaround time is approximately 24 hours.

Phone: 800-521-0546

Fax: 800-505-3299

E-mail: customcomponents@pcs-company.com

Finished Cut To Length Pins

PCS can cut standard straight ejector pins, step ejector pins, and core pins to custom lengths. Provide the PCS item part#, quantity to be quoted, length requested, and tolerance requirements. Customers will receive a price quotation for this fee based service within 1 working day.

PCS Part#	Qty.	Length Requested	Tolerance Requested

COMPANY _____

CONTACT _____

E-MAIL _____


ADDRESS _____

CITY, ST. ZIP _____

PHONE _____

FAX _____

DATE _____



Note: Quote turnaround time is approximately 24 hours.

www.pcs-company.com

Phone: 800-521-0546
 Fax: 800-505-3299
 E-mail: customcomponents@pcs-company.com

Wind From Stock Coil Heater RFQ Form

Winding Pattern (number of winds each) Example Shown = 3 - 2 - 3

Tip: _____ Center: _____ Lead: _____



Width of coil heater: _____

I.D. (Inside Diameter): _____

O.D. sheath (check one): Yes No
(O.D. sheath suggested for 1.25" or larger I.D.)

Standard leads 48" Teflon Insulated (Rated to 500° F)

Rated Wattage: _____

Rated Voltage: _____

Internal Type J T/C (check one):

Yes No

Lead Protection Options (check one):



Fiberglass sleeve



Nema rated sleeve



Braided metal sleeve



Armor cable

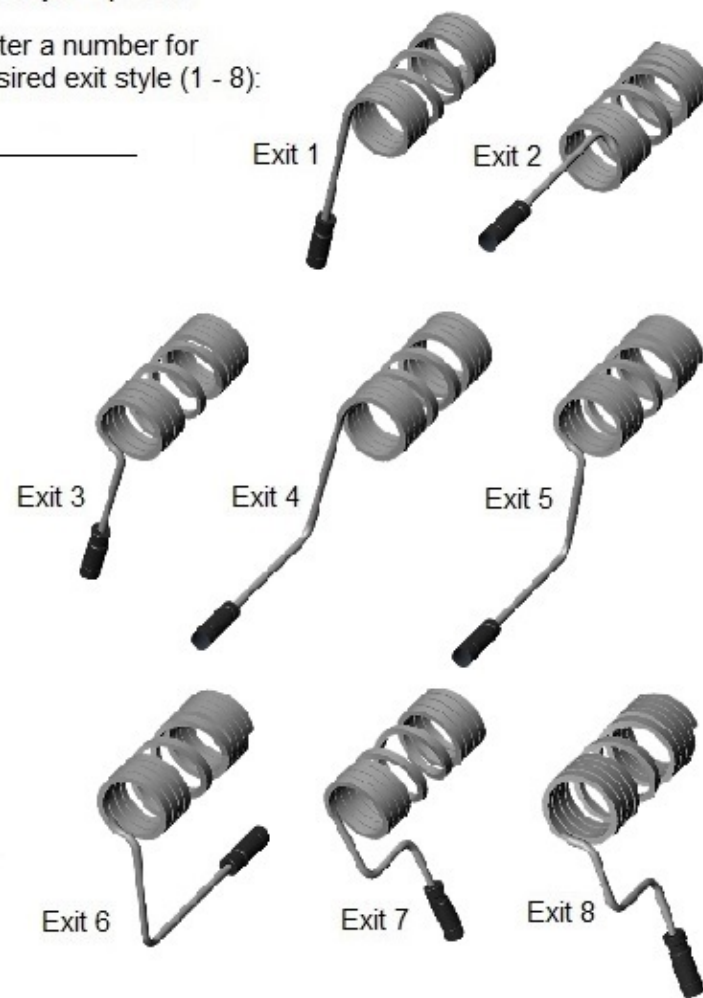


Gas proof armor cable

Quantity: _____

Exit Style Options

Enter a number for desired exit style (1 - 8):



COMPANY _____

PHONE _____ FAX _____

CONTACT _____

DATE _____

E-MAIL _____



Quote turn around:
24 hours with completed template

Phone: 800-521-0546

Fax: 800-505-3299

E-mail: hotrunners@pcs-company.com

Request For Quote Form Manifold Cleaning

Manifold Cleaning & System Refurbishment quoting is a two-step process

Step 1. PCS will provide a price quotation for cleaning and inspection only.

Step 2. After a purchase order is received and the cleaning and inspection is completed, PCS will provide a price quotation for system refurbishment (component repair, replacement parts, etc.).

Please supply the following information

OEM Manufacturer Name (i.e. Husky, Synventive, Mold-Masters)	
Hot Runner System Job/Tool I.D. Number	
Manifold Dimensions (<i>In Inches</i>) Length x Width x Height	
Number of Drops	
Resin Type(s) Used in System	
System Type: Thermal Tip or Valve Tip	
Approximate Age of System	
Will you be shipping the system assembled or disassembled?	

COMPANY	_____
CONTACT	_____
E-MAIL	_____
ADDRESS	_____
CITY, ST. ZIP	_____
PHONE	_____
FAX	_____
DATE	_____



Phone: 800-521-0546

Fax: 800-505-3299

E-mail: customcomponents@pcs-company.com

Request For Quote Form Nozzle Heater & Hot Runner Components Repair

Please check all that apply:	OEM Manufacturer	OEM Part Number	*Is CAD/Drawing Available Yes or No	QTY.
Nozzle Heater Repair				
Nozzle Seal-Off Repair				
Valve Bushing Repair				
Other				

COMPANY _____

CONTACT _____

E-MAIL _____


ADDRESS _____

CITY, ST. ZIP _____

PHONE _____

FAX _____

DATE _____

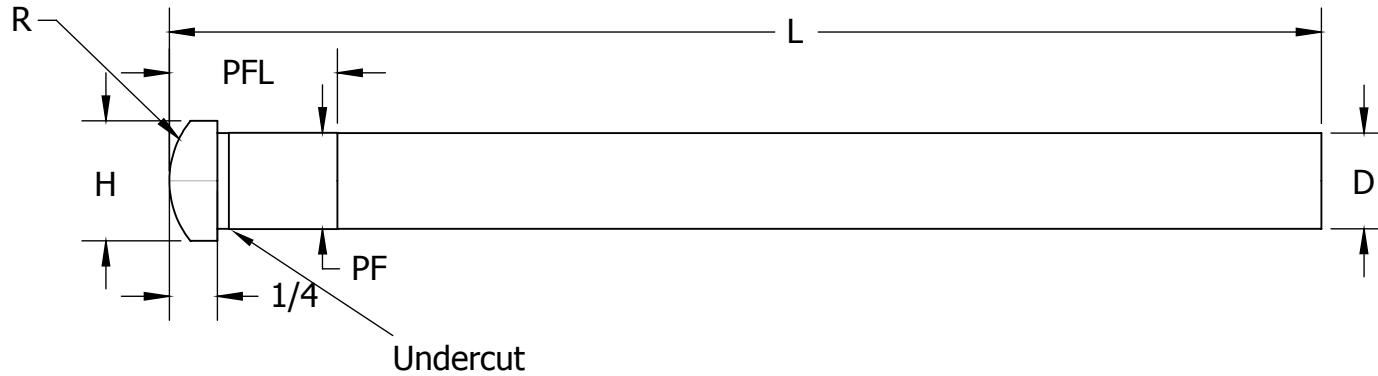


www.pcs-company.com

Phone: 800-521-0546
 Fax: 800-505-3299
 E-mail: customcomponents@pcs-company.com

Note: Email or Fax CAD/Drawing and product image next to ruler with this document.

Custom Components Quote Request Template **Radius Angle Pin**



Radius Angle Pin Design Table: Enter custom dimensions below		Requested Tolerances
Overall Length (L)		
Pin Diameter (D)		
Head Diameter (H)		
Press Fit Diameter (PF)		
Press Fit Length (PFL)		
Head Radius (R)		
Quantity		
Material		
Hardness		

Standard Tolerances	
Overall Length (L)	+0.125 +.000
Pin Diameter (D)	+0.0000 -0.0005
Head Diameter (H)	+0.000 -0.010
Press Fit Diameter (PF)	+0.0005 -0.0000
Head Thickness	+0.000 -0.005
Press Fit Length (PFL)	-0.010 -0.040

COMPANY _____

CONTACT _____

E-MAIL _____

ADDRESS _____

CITY, ST. ZIP _____

PHONE _____

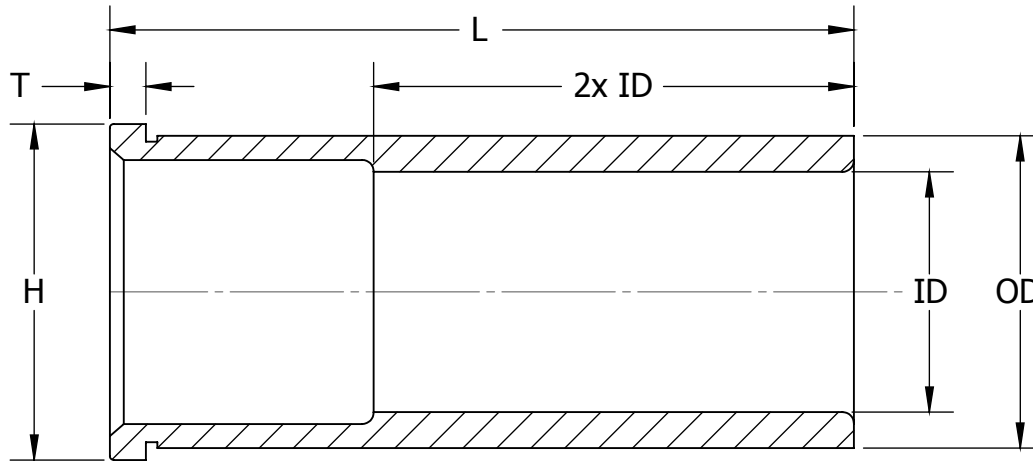
FAX _____

DATE _____

PCS COMPANY *Note: Quote turnaround time is approximately 24 hours.*
www.pcs-company.com

Phone: 800-521-0546
Fax: 800-505-3299
E-mail: customcomponents@pcs-company.com

Custom Components Quote Request Template **Shoulder Bushing**



Shoulder Bushing Design Table: Enter custom dimensions below		Requested Tolerances
Bushing Inside Diameter (ID)		
Bushing Outside Diameter (OD)		
Overall Length (L)		
Head Thickness (T)		
Head Diameter (H)		
Quantity		
Material		

Standard Tolerances	
I.D.	+ .0000 + .0005
O.D.	+ .0005 - .0000
Overall Length (L)	- .030 - .060
Head Diameter (H)	+ .000 + .010
Head Thickness	+ .000 + .005

COMPANY _____

CONTACT _____

E-MAIL _____

ADDRESS _____

CITY, ST. ZIP _____

PHONE _____

FAX _____

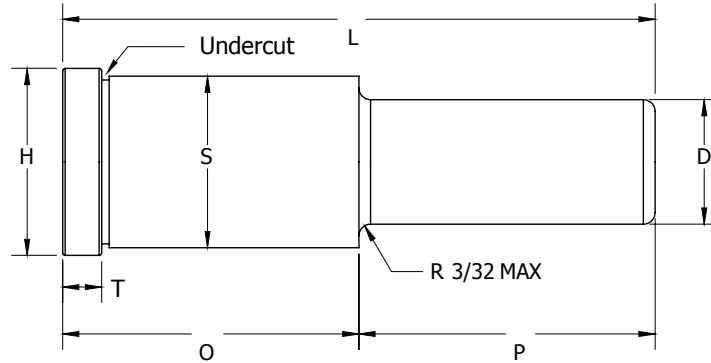
DATE _____

PCS COMPANY
www.pcs-company.com

Note: Quote turnaround time is approximately 24 hours.

Phone: 800-521-0546
Fax: 800-505-3299
E-mail: customcomponents@pcs-company.com

Shoulder Leader Pin



$$(O + P = L)$$

Shoulder Leader Pin Design Table: Enter custom dimensions below		Requested Tolerances
Pin Diameter (D)		
Shoulder Diameter (S)		
Head Diameter (H)		
Head Thickness (T)		
Overall Length (L)		
Pin Length (P)		
Shoulder Length (O)		
Quantity		
Material		
Hardness		

Standard Tolerances	
Pin Diameter (D)	+ .0000 - .0005
Shoulder Diameter (S)	+ .0005 - .0000
Overall Length (L)	- .03 - .06
Shoulder Length (O)	- .01 - .04
Head Diameter (H)	+ .000 - .010
Head Thickness (T)	+ .000 - .0005

COMPANY _____

CONTACT _____

E-MAIL _____


ADDRESS _____

CITY, ST. ZIP _____

PHONE _____

FAX _____

DATE _____

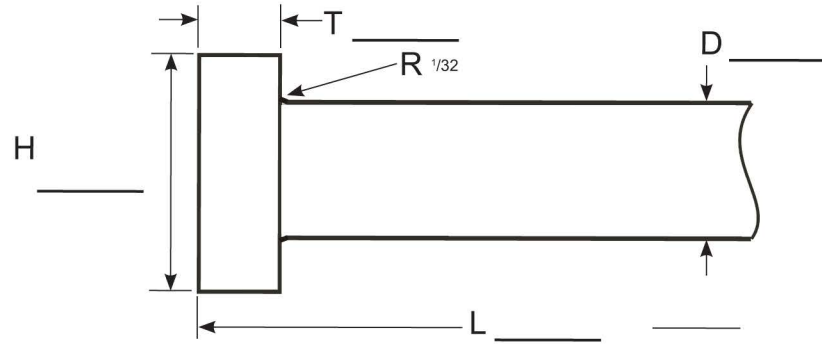


Note: Quote turnaround time is approximately 24 hours.

www.pcs-company.com

Phone: 800-521-0546
 Fax: 800-505-3299
 E-mail: customcomponents@pcs-company.com

Custom Components Quote Request Template **Special Core Pin**



Special Core Pin Design Table: Enter custom dimensions below		Requested Tolerances
Length (L)		
Pin Diameter (D)		
Head Diameter (H)		
Head Thickness (T)		
Quantity		
Material		
Hardness Soft 30-35 <input type="checkbox"/>	Hard 50-55 <input type="checkbox"/>	
Coating available: Armorclad™ <input type="checkbox"/> Yes <input type="checkbox"/> No		

Standard Tolerances	
Length (L)	+ .062 - .000
Pin Diameter (D)	+ .0010 + .0005
Head Diameter (H)	+ .000 - .010
Head Thickness (T)	+ .000 - .002

COMPANY _____

CONTACT _____

E-MAIL _____

ADDRESS _____

CITY, ST. ZIP _____

PHONE _____

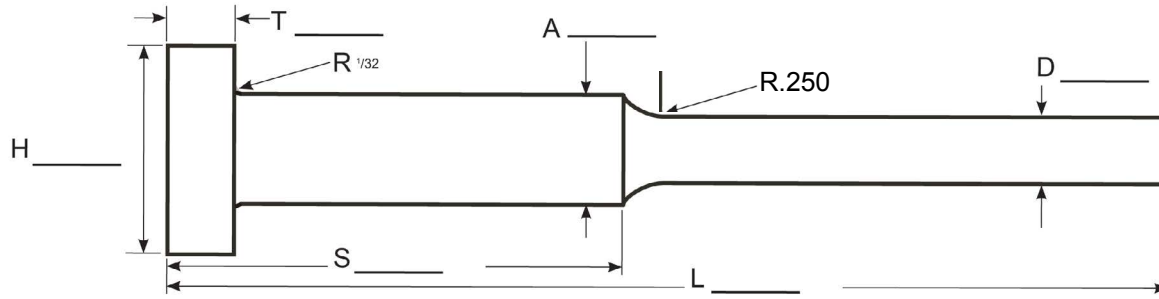
FAX _____

DATE _____

PCS COMPANY *Note: Quote turnaround time is approximately 24 hours.*
www.pcs-company.com

Phone: 800-521-0546
Fax: 800-505-3299
E-mail: customcomponents@pcs-company.com

Step Pin



Step Pin Design Table: Enter custom dimensions below		Requested Tolerances
Length (L)		
Pin Diameter (D)		
Head Diameter (H)		
Head Thickness (T)		
Shoulder Diameter (A)		
Shoulder Length (S)		
Quantity		
Material		
Hardness		
Coating available: Armorclad™ <input type="checkbox"/> Yes <input type="checkbox"/> No		

Standard Tolerances	
Length (L)	+0.062 -0.000
Pin Diameter (D)	+0.0000 -0.0003
Head Diameter (H)	+0.000 -0.010
Head Thickness (T)	+0.000 -0.002
Shoulder Diameter (A)	+0.000 -0.001
Shoulder Length (S)	+0.010 -0.010

COMPANY _____

CONTACT _____

E-MAIL _____

ADDRESS _____

CITY, ST. ZIP _____

PHONE _____

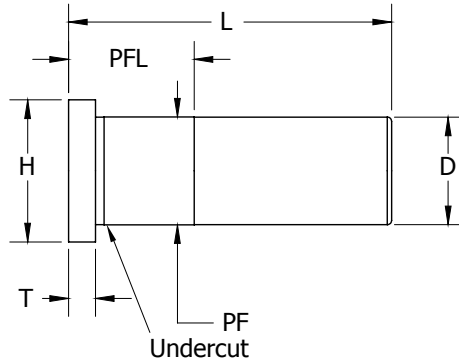
FAX _____

DATE _____

PCS COMPANY *Note: Quote turnaround time is approximately 24 hours.*
www.pcs-company.com

Phone: 800-521-0546
Fax: 800-505-3299
E-mail: customcomponents@pcs-company.com

Straight Leader Pin



Straight Leader Pin Design Table: Enter custom dimensions below		Requested Tolerances
Overall Length (L)		
Pin Diameter (D)		
Head Diameter (H)		
Press Fit Diameter (PF)		
Press Fit Length (PFL)		
Head Thickness (T)		
Quantity		
Material		
Hardness		

Standard Tolerances	
Overall Length (L)	-.030 -.060
Pin Diameter (D)	+.0000 -.0005
Press Fit Diameter (P.F.)	+.0005 -.0000
Head Diameter (H)	+.000 -.010
Head Thickness (T)	+.000 -.005

COMPANY _____

CONTACT _____

E-MAIL _____

ADDRESS _____

CITY, ST. ZIP _____

PHONE _____

FAX _____

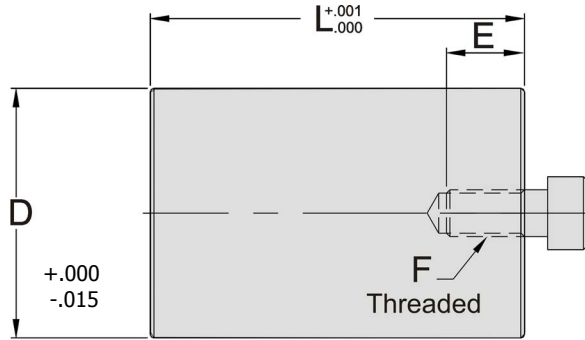
DATE _____

PCS COMPANY *Note: Quote turnaround time is approximately 24 hours.*
www.pcs-company.com

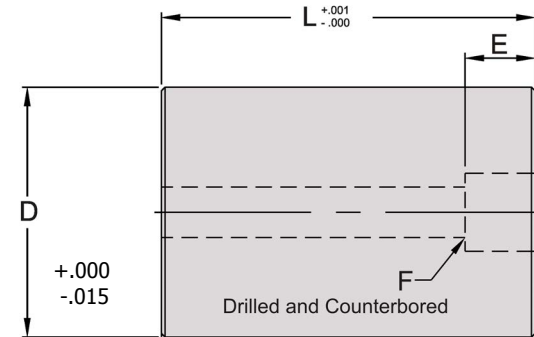
Phone: 800-521-0546
Fax: 800-505-3299
E-mail: customcomponents@pcs-company.com

Support Pillar

TAPPED



DRILLED & COUNTERBORED



Threaded (Tapped Hole) Support Pillar
Enter custom dimensions below

Outside Diameter (D)	
Overall Length (L)	
Thread Size (F)	
Thread Depth (E)	
Quantity	
Material Required	

Drilled & Counterbored Support Pillar
Enter custom dimensions below

Outside Diameter (D)	
Overall Length (L)	
Mounting Screw Thread Size (F)	
Counterbore Depth (E)	
Quantity	
Material Required	

Note: SAE1040 Steel unless otherwise specified.

COMPANY _____
 PHONE _____ FAX _____
 CONTACT _____
 DATE _____
 E-MAIL _____



Note: Quote turnaround time is approximately 24 hours.

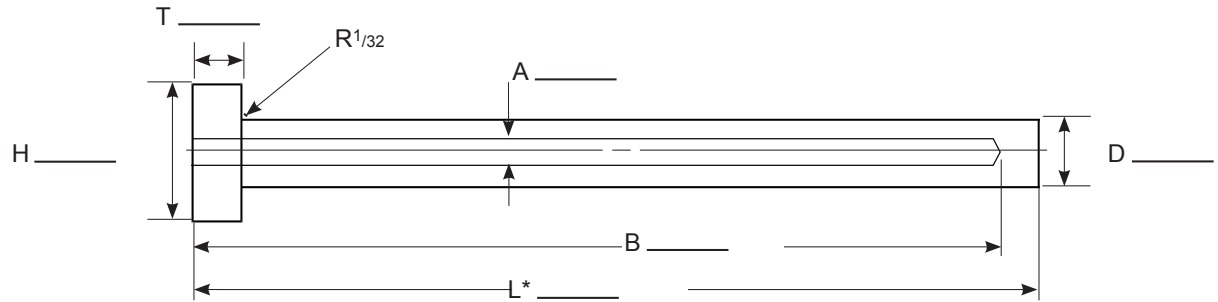
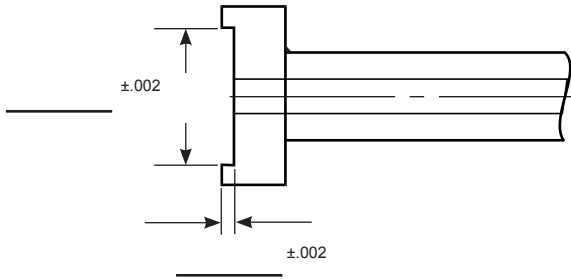
Phone: 800-521-0546

Fax: 800-505-3299

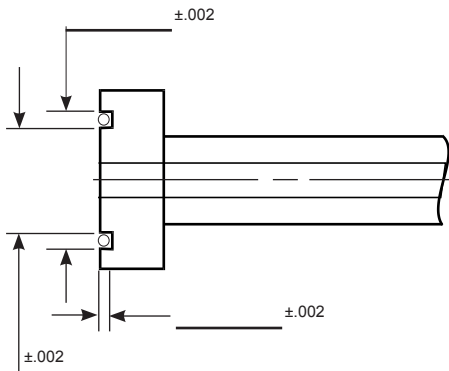
E-mail: customcomponents@pcs-company.com

Water Cooled Core

Counterbore



O-Ring Groove



Water Cooled Core Design Table: Enter custom dimensions below		Requested Tolerances
Pin Diameter (D)		
Head Diameter (H)		
Head Thickness (T)		
Length (L)		
Waterline Diameter (A)		
Waterline Depth (B)		
Material		
Hardness		
Quantity		
Coating available: Armorclad™		

Standard Tolerances	
Length (L)	+ .062 - .000
Pin Diameter (D) ≤ 1/2"	+ .0000 - .0003
Pin Diameter (D) > 1/2"	+ .0000 - .0005
Head Diameter (H)	+ .000 - .010
Head Thickness (T)	+ .000 - .002

***EXTRA LENGTH PROVIDED FOR FINAL ASSEMBLY**

COMPANY _____

CONTACT _____

E-MAIL _____


ADDRESS _____

CITY, ST. ZIP _____

PHONE _____

FAX _____

DATE _____



Note: Quote turnaround time is approximately 24 hours.

www.pcs-company.com

Phone: 800-521-0546
 Fax: 800-505-3299
 E-mail: customcomponents@pcs-company.com