

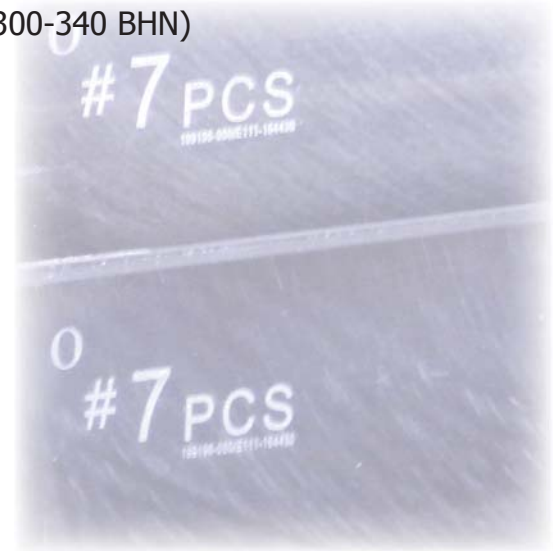
Stainless Steel Standard Mold Bases

24 "A Series" frame size and plate thickness combinations



Features:

- All plates 420 stainless steel (300-340 BHN)
- Off the shelf availability
- Most orders ship same day
- Guided ejection
- Locating Ring
- Sprue Bushing
- Finished stop discs
- Ground parting line surfaces
- Interchangeable plates
- Return pins
- Vented leader pins
- Hoist ring holes
- Pry slots
- 3D CAD data available



Standard Frame Sizes, Plate Thicknesses & Part Numbers

Frame Size	"A" Plate Thickness	"B" Plate Thickness	Rail Height	Part Number
7-7/8" x 7-7/8"	1-3/8"	1-7/8"	3"	88A-13-17-3-SS
			4"	88A-13-17-4-SS
		2-3/8"	3"	88A-13-23-3-SS
			4"	88A-13-23-4-SS
	1-7/8"	1-7/8"	3"	88A-17-17-3-SS
			4"	88A-17-17-4-SS
		2-3/8"	3"	88A-17-23-3-SS
			4"	88A-17-23-4-SS
7-7/8" x 11-7/8"	1-3/8"	1-7/8"	3"	812A-13-17-3-SS
			4"	812A-13-17-4-SS
		2-3/8"	3"	812A-13-23-3-SS
			4"	812A-13-23-4-SS
	1-7/8"	1-7/8"	3"	812A-17-17-3-SS
			4"	812A-17-17-4-SS
		2-3/8"	3"	812A-17-23-3-SS
			4"	812A-17-23-4-SS
9-7/8" x 11-7/8"	1-3/8"	1-7/8"	3"	1012A-13-17-3-SS
			4"	1012A-13-17-4-SS
		2-3/8"	3"	1012A-13-23-3-SS
			4"	1012A-13-23-4-SS
	1-7/8"	1-7/8"	3"	1012A-17-17-3-SS
			4"	1012A-17-17-4-SS
		2-3/8"	3"	1012A-17-23-3-SS
			4"	1012A-17-23-4-SS

Non-standard stainless steel mold base sizes available.